

ProJet[®] 3600

ProJet[®] 35X0

Professional 3D Printers



Release Notes

ProJet 3600 firmware version 6.5.8906

ProJet 35X0 firmware version 5.12.8830

3D Modeling Accelerator 5.11.8920

Software: **3D Modeling Accelerator 5.11.8920**

Other Supported Firmware: **ProJet 3000 Config B firmware version 5.4.4356, ProJet 3000 Config A firmware version 2.05.2395, ProJet 5000 firmware version 5.2.4559, InVision firmware version 3.44**

Release Date: November 2016

1 INTRODUCTION

We are proud to announce the new printer firmware versions 5.12.8830, 6.5.8906 and 3D Modeling Accelerator 5.11.8920. For more help and information, please visit the [InfoCenter](#).

2 INSTALLATION

INSTALLING 3D MODELING ACCELERATOR

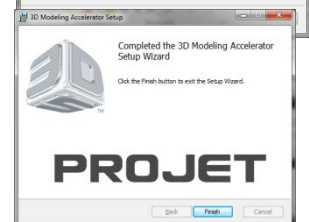
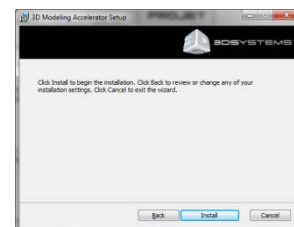
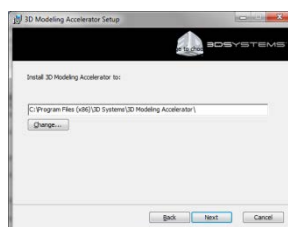
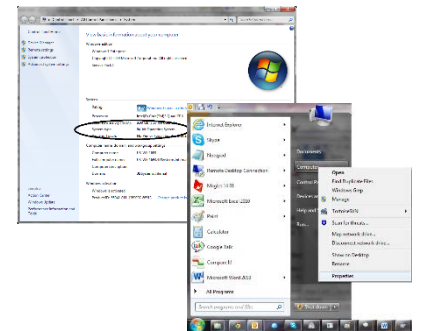
Installation of 3D Modeling Accelerator 5.11.8920

1. Visit Info Center to download the software.
 2. Log in with your credentials.
- Note: If you do not have an account, create one by clicking Create an account.**
3. Go to *Products > Professional Printers > ProJet 3600* or *Products > Professional Printers > ProJet 35X0*
 4. Under Software Download, click the appropriate 3D Modeling Accelerator package to download the installer.
 - Determine if you are running an X32 bit Windows Operating System or X64 Operating Systems.

- Right click on “My Computer” (Windows XP) or “Computer” (Windows 7 & 8 & 10)
- Choose Properties
- If it does not state X64, then the system is likely 32bit

- Download the following Microsoft Installer (.msi):
 - 3D Modeling Accelerator - 5.11.8920.msi for X32 Bit
 - 3D Modeling Accelerator - 5.11.8920(X64).msi for 64 bit

5. Extract and run the installer.
6. When the installer opens, click **Next**.
7. Please thoroughly read over the License Agreement; then click **Next** to proceed.
8. Choose the destination folder and then click **Next**.
9. To start the installation, click **Install**.
10. The installation will start, click Finish when it has been completed.

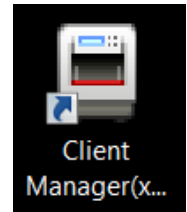


INSTALLING THE FIRMWARE

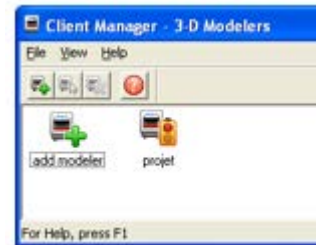
Note: The printer must be in idle state before starting the update process. Please verify that the printer is not printing, and that the status indicator is green before starting the update.

Follow these steps to upgrade to firmware version 6.5.8906:

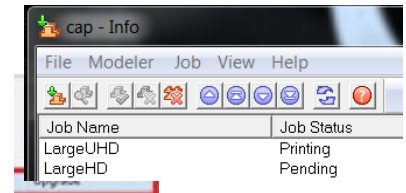
1. Start **3D Modeling Accelerator** from the start menu or desktop.



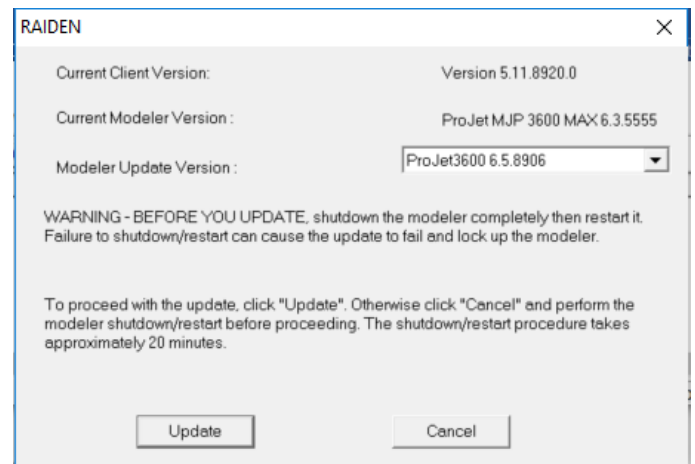
2. The client manager will open, see registered printers on the network. If a printer is not currently registered in the client manager software, you can add it by clicking **add modeler**.



3. Once the printer has been added to the client manager, double-click the added printer.
4. The print queue for the printer will open. On the top menu, click **Modeler > Upgrade**.



5. A message will appear. Please verify that the printer is being upgraded to the correct software version. After verifying the information, click **Upgrade** to start the upgrade process.



6. The printer will restart after the upgrade has been completed.

ENHANCEMENTS AND FIXES

3D Modeling Accelerator Client 5.11.8920

The following issues have been addressed since the last Accelerator Client Release.

1. **Added support for ProJet 3600 Control Code 6.5.8906**
2. **Added support for ProJet 35X0 Control Code 5.12.8830**
3. **Users are no longer required administrator rights to operate Client Accelerator**
4. **Users are able to obtain debug log files by using Client Accelerator.**

ProJet® 3600 Firmware 6.5.8906

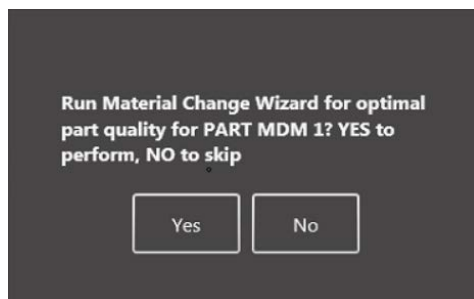
The following issues have been addressed since the last ProJet® 3600 firmware release.

1. **Compatible with 3D Sprint 2.1 (or later) client software**
2. **Users are able to copy Large Volume Mode builds**
3. **Fixed excessive logging of TCP issues**
4. **Addressed minimum vacuum setting shown as 5.**
5. **Implemented fix for trough temperature out of range issue.**
6. **Fixed printer GUI disconnect issues.**
7. **Support future upgrades via 3D Sprint.**
8. **Correct verification strips are available for correct print modes.**
9. **Printers in online status will correctly prompt “Mismatch Material”.**

ProJet® 35X0 Firmware 5.12.8830

The following issues have been addressed since the last ProJet® 35X0 firmware release.

1. **Added M3 Cast as accepted material on wax printers**
2. **Fixed 3500 CPX Max XHD mode platform size issue**
3. **Users are able to copy Large Volume Mode builds**
4. **Compatible with 3D Sprint 2.1 (or later) client software**
5. **Fixed 3510 DP Pro mandatory material changeover wizard upon upgrading.**



6. **3510 CPX printers no longer default to 7200 seconds regardless of previous material state**

KNOWN ISSUES

No Preview for SLC Files

This affects Client Accelerator and not 3D Sprint. This will be fixed in an Upcoming Release.

Post Cure on Support Only Builds

This will be fixed in an Upcoming Release.

Touchscreen Keypad Only Allows Caps and not Lowercase Letters

This will be fixed in an Upcoming Release.

No Prompt for Disabled Pumps

Solution #1:

1. Select **Settings Tab**
2. Click on **User Interface Tile**
3. Click on **Minimize Tab** (Located in the Bottom Right)
4. Click on **Windows Start Icon**
5. Restart Windows

Solution #2: (ONLY FOR AUTHORIZED PERSONEL)

1. Select **Settings Tab**
2. Click on **User Interface Tab**
3. Click on **Log Off Tile**
4. Log onto **3DService**
5. Open **RMTDiag**
6. **Enable Pumps**
7. Close **RMTDiag**
8. Log Off **3DService**
9. Log On **ProJet User**

Monitor Not Formatted Correctly on ProJet 3600 Series

In the rare case the UI is not configured correctly.

Solution:

1. Select **Settings Tab**
2. Select **User Interface Tile**
3. Select **Minimize**
4. Select **Start**
5. Select **All Programs**
6. Select **Startup**
7. Select **ConfigureHDMIIMonitor**
 - Command Prompt Window will Open
 - Allow Script to Complete
 - Command Prompt Window will Close Automatically
8. If UI looks and functions correctly then you are done. If not proceed to the next step.
9. Select **Start**
10. Select **Control Panel**
11. Select **Display**
12. Select **Adjust Resolution**
13. In the Multiple Displays Section; Select **Display desktop only on 2**
14. Select **Apply** and Monitor should look and function correctly.
15. Close all Windows and Re-Open **Print3D 2.0**